

in-line fuse switch-disconnector 160 A (33772)



The picture may show a similar product.

Description

Part No.: 33772

QUADRON[®]185Power

in-line fuse switch-disconnector 160 A

box terminal 70 mm², high version

Size 00, 1-pole switchable

for busbars 30, 40, 60, 80, 100, 120 x 10

System

185Power

Advantages of the product

Self-closing inspection holes are available in the cover.

Cover can be locked when closed.

Product group 12

Subgroup 42

pack size 1
EAN 4021267337728

catalog page 2020 : 4.10, 4.9

ECLASS 6.1 27142108
ECLASS 7.1 27142108
ETIM 4.0 EC001046
ETIM 5.0 EC001046

Approvals

Standards

IEC 60947-1:2007 + A1:2010 + A2:2014
IEC 60947-3:2008 + A1:2012 + A2:2015

Approvals

IEC (CB) , CCC , EAC



type number: QU185-00
EAC Type: NH

CCC certificate: 2015010302769751

Technical data

for fuse links size:	NH 000, NH 00
fuse links acc. to standard:	IEC / HD 60269-2
permitted power dissipation of the fuse-link:	12 W
requirements for contact parts:	Fuse links with silver-plated contact pieces recommended. For fuse links with nickel-plated contact pieces, a reduction factor of 0.8 is to be observed.

Details IEC

Standards

IEC 60947-1:2007 + A1:2010 + A2:2014
IEC 60947-3:2008 + A1:2012 + A2:2015

Electrical data IEC

Rated current (IEC): 160 A
rated voltage (IEC) AC: 690 V

rated isolation voltage U_i AC: 1000 V
rated surge voltage U_{imp} : 8 kV

Utilisation category AC (IEC 60947-3): AC-23B 160A/400V
AC-22B 160A/500V

Utilisation category DC (IEC 60947-3): DC-20B
max. voltage between the fuses: 1000V
visible information required: Do not switch under load.

cond. short-circuit current with fuses (AC): 100 kA / 690 V
approved with fuse links of operation class: gG

power dissipation of the article:
The power dissipation at a typical load of 80 % results to 17.9 W.
(The power dissipation at full load would be 28.0 W.)

A fuse-combination unit acc. to IEC 60947-3 can only be operated at a higher voltage than its rated voltage, if it is used as a fuse-disconnector without breaking capacity, up to its max. rated insulation voltage and labelled as such.

Degree of protection IP20 at front, degree of protection near terminal depends on installation

Mechanical data

W x H x D: 50 x 670 x 189
weight: 256.3 kg/100
for busbars: 30, 40, 60, 80, 100, 120 x 10

CT can be integrated in the device: ja
front degree of protection: IP20

Type of fastening:
can be screwed onto drilled busbar, undrilled mounting with terminal clamp
connection:
box terminal 95mm²

Terminal points

Box terminal:

1,5 -70mm² flexible cables, directly or with wire-end ferrules*, depending on contour of the insulated lead 95mm² could be connectable

1,5 -10mm² solid round

16 -70mm² stranded round

2x10mm², 2x16mm² and 2x25mm² flexible with wire-end ferrules, identical cables placed side by side, crimping square

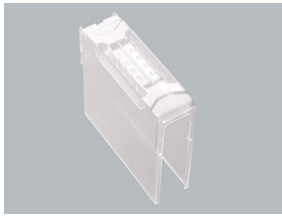
2x 10-35mm² flexible identical cables placed side by side

lam. Cu. 9-13 mm wide

terminal space 13mm x 13mm

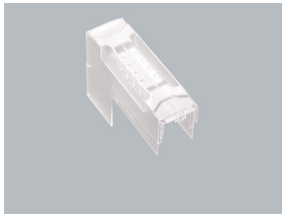
(*flexible cables of maximum cross-section may not fit when using wire-end ferrule)

Accessories



33732

terminal compartment cover, high version, connection bottom
for 33700, 33715, 33720, 33770, 33771, 33772 and QUADRON®185Power Speed
size 00
size 00



33726

terminal compartment cover, high version, connection top
size 00
for: 33700, 33715, 33720, 33770, 33771, 33772



33739

terminal clamp
for busbar systems without system covers
size 00



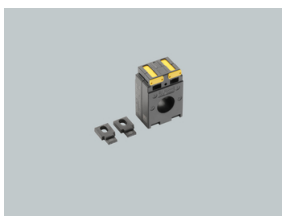
33741

current transformer 80 A / 5 A
2,5 VA / class 1
size 00



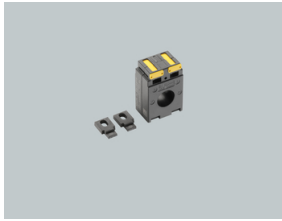
33742

current transformer 150 A / 5 A
2.5 VA / class 1
size 00



33749

current transformer 100 A / 5 A
1.5 VA / class 0.5
size 00

**33751**

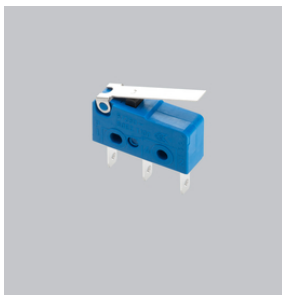
current transformer 150 A / 5 A
2.5 VA / class 0.5
size 00

**33750**

current transformer 100 A / 5 A, with decl. of conformity
1.5 VA / class 0.5
size 00

**33752**

current transformer 150 A / 5 A, with decl. of conformity
2.5 VA / class 0.5
size 00

**33156**

pilot switch
changeover 250 V AC / 5 A, 30 V DC / 4 A

**33113**

lateral cover support
for front covers
size 00 - 3

**33915**

connection for auxiliary line, for box terminal
flat connector EN 61210 6.3 x 0.8
QCB-NH00, QCS-NH00, QCS-160



33758
lateral bearing strip
for front covers
size 00 - 3



33765
CrossLink® terminal clamp IP20
for busbar systems with touch-safe protection
size 00